

GEORGIA FOOD OASIS NETWORK



Rome Community Coalition Rome, GA

CORE PARTNERS

- Harbin Clinic
- The William S. Davies Homeless Shelter
- The Heart of the Community Foundation
- Rome-Floyd ECO Center
- Keep Rome-Floyd Beautiful
- Berry College
- South Rome Redevelopment Corp.
- Between the Rivers Farmer's Market
- Living Proof Recovery

GRASSROOTS NETWORK

Established: 2017

Organizational Structure: informal, independent

Fiscal Agent: The William S. Davies Homeless Shelter

Background: grassroots projects + coordination.

CONTACT INFORMATION

Bobby Jones,

Coordinating Leadership
rbjones1987@gmail.com

Emma Wells,

Keep Rome-Floyd Beautiful
ewells@rome.ga.us

COMMUNITY INITIATIVES & PROJECTS

- South Meadow Farm: William S. Davies Homeless Shelter has broken ground on a 2-acre vegetable farm to improve quality of experience and food sovereignty of residents.
- The Davies Farm Bus: in partnership with Berry college, a remodeled bus serves as a mobile market.
- Rome-Floyd ECO Center: incorporates horticulture and gardening education for residents.
- South Rome Redevelopment Corporation: grassroots community gardening initiative.
- BeeShees: female beekeeping collective.

LOCAL FOOD ACCESS POINTS

Harbin Clinic Farm Stand, summer months, Tuesday 11am-1pm

The Davies Farm Bus*, rotation of afternoon stops on Tuesday & Thursday

Between Rivers Farmer's Market, May-Oct., Saturday 8:00-11:30am

Rome Farmer's Market at Ridge Ferry Park, June-Oct., Wed. & Sat. 7-11am

*accepts EBT/SNAP

LOCAL POLICIES & PROGRAMS

City of Rome permits residents to own chickens (hens only):

A. minimum lot size requirement of 30,000 sqft. or .68 acres. maximum of 4 hens permitted.

Land Reserve Areas: can be used for community gardens and crop cultivation.

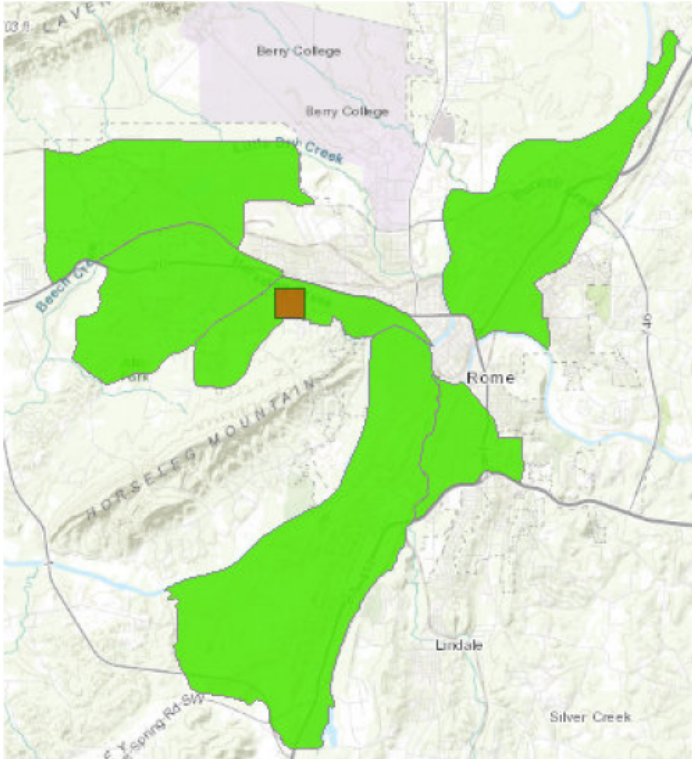
Community Gardens: defined use in residentially-zoned areas, minimum lot size of 7,500 sqft or .12 acres, must have 4 parking spaces.

FLOYD COUNTY HEALTH RANKINGS

- **Food Insecurity: 14%**
- **Children Eligible for Free & Reduced Lunch: 58%**
- **Adult Obesity: 35%**
- **Food Environment Index Rating: 7.4***

*Scale of 1-10, 10 being best. Rating factors local food insecurity rates + access to healthy foods in local environment.

Source: Univ. of Wisconsin, 2019.



Low Access Area(s)

Neighbors in the green area travel 1-10 miles to a grocery store and earn \$39K or less for a family of 4.

Retailers Accepting SNAP

Grocery Stores: 19
Convenience Stores: 76
Supercenter/Club: 3

Direct-to-Consumer Farms

Overall Farms: 40
Farms harvesting vegetables: 26
Farms harvesting fruit: 17

Sources: USDA's Food Environment Atlas, Food Access Atlas, National Agricultural Statistics Service. Data years range from 2012-2017.



seeded by Georgia Organics

Georgia Food Oasis Network (GFON) is a community outreach initiative of Georgia Organics. GFON seeks to elevate and connect pioneering communities that recognize food is a powerful tool to unite residents, build local economies, and foster public health. As a GFON member, this community is dedicated to a coalition strategy that promotes:



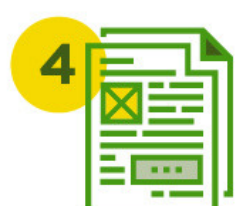
Public Engagement



Partnership



Planning



Policy

Georgia Organics connects organic food from Georgia farms to Georgia families.